



The Old Chapel, **Wildhern**

Myddelton&Major









A 19th Century former chapel sensitively converted with a wealth of character.

Tenure: Freehold Size: 942.0 ft<sup>2</sup> EPC Rating: D (68) Council Tax Band: D



Services - Mains water, Mains electricity, Private septic tank.

Andover 3.7 Miles • Winchester 20.4 Miles • Basingstoke 26.7 Miles • Newbury 14.4 Miles

## The Old Chapel, Wildhern Andover, Hampshire, SP11 0JE

- Porch
- Understairs cupboard
- Spare bedroom
- Landing/ study space
- Terrace
- Kitchen/breakfast/living room
- Cloakroom with shower
- Main bedroom with en-suite
- Loft storage cupboard
- Off-road parking

### The Property

An attractive ecclesiastical building combining pared back modern architecture with wonderful tactile materials and original beams. The wooden flooring has been lovingly restored and benefits from underfloor heating. A Howdens shaker kitchen with brushed stainless steel handles offers a functional space including a Neff oven, Lamona induction hob, integrated dishwasher, washing machine & fridge/freezer. Solid oak worktops and a butlers sink. An impressive oak staircase leads to the first floor and includes a spacious storage cupboard beneath. The main bedroom and office/bedroom two are fully carpeted. The bathrooms are stylish and well laid out. The landing could suit as a study or reading area. A wonderfully airy and light property, whilst simultaneously intimate and warm. Areas of exposed flint pay homage to the history of the building and highlight the sympathetic renovation work. The soaring double height living area, with its large clerestory double glazing, is both the focal point and a celebration of the buildings original purpose.

### Outside

To the front of the property, there is off-road parking for two cars. To the rear is a terrace. Additional garden is available, please enquire with Agents for more details.

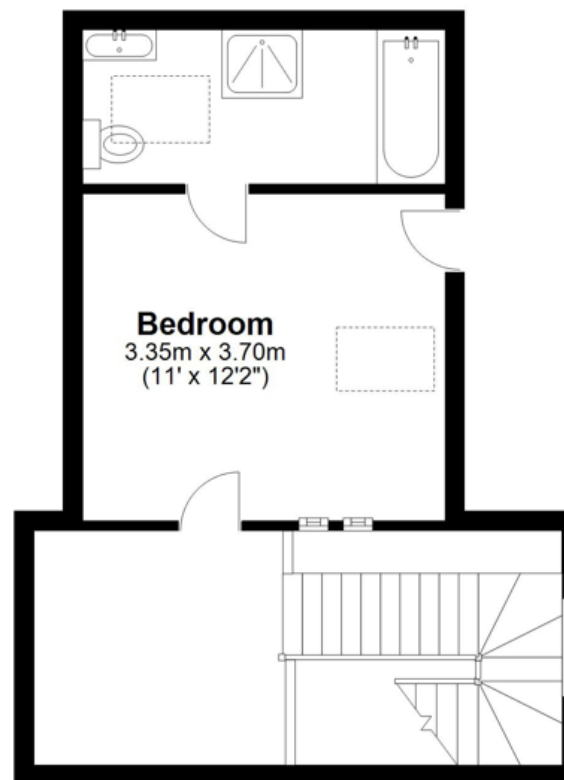




## Ground Floor



## First Floor



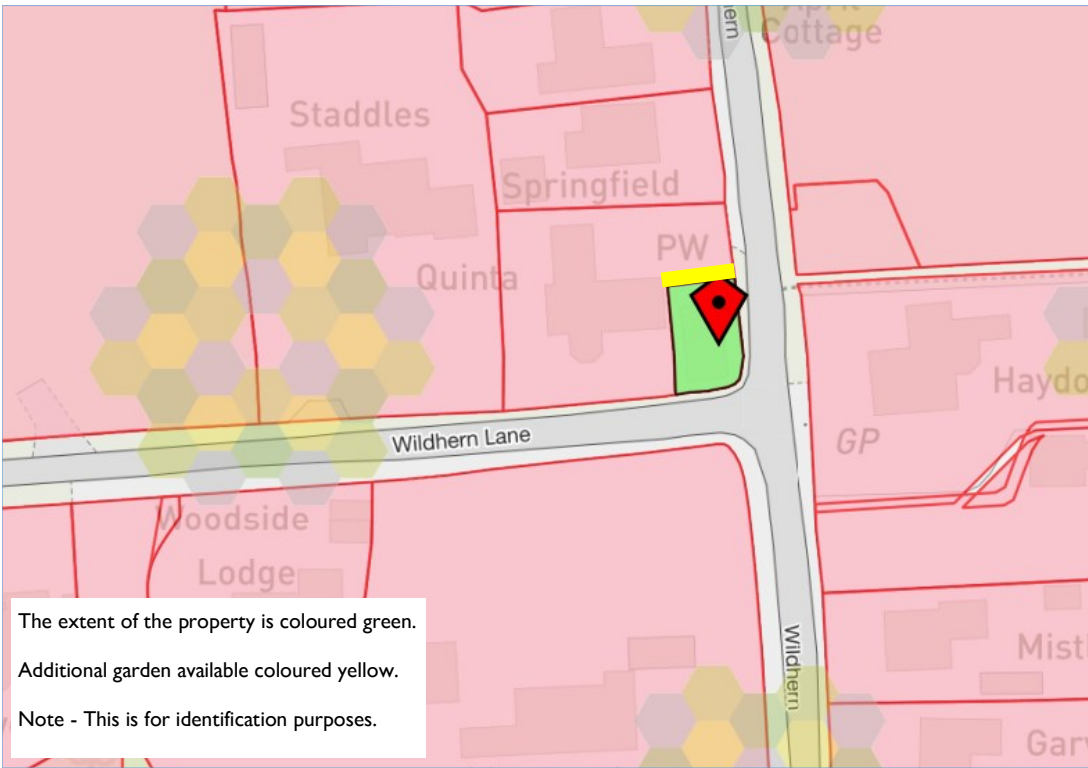
Total Area: approx 87.5 sqm (942.0 sqft)



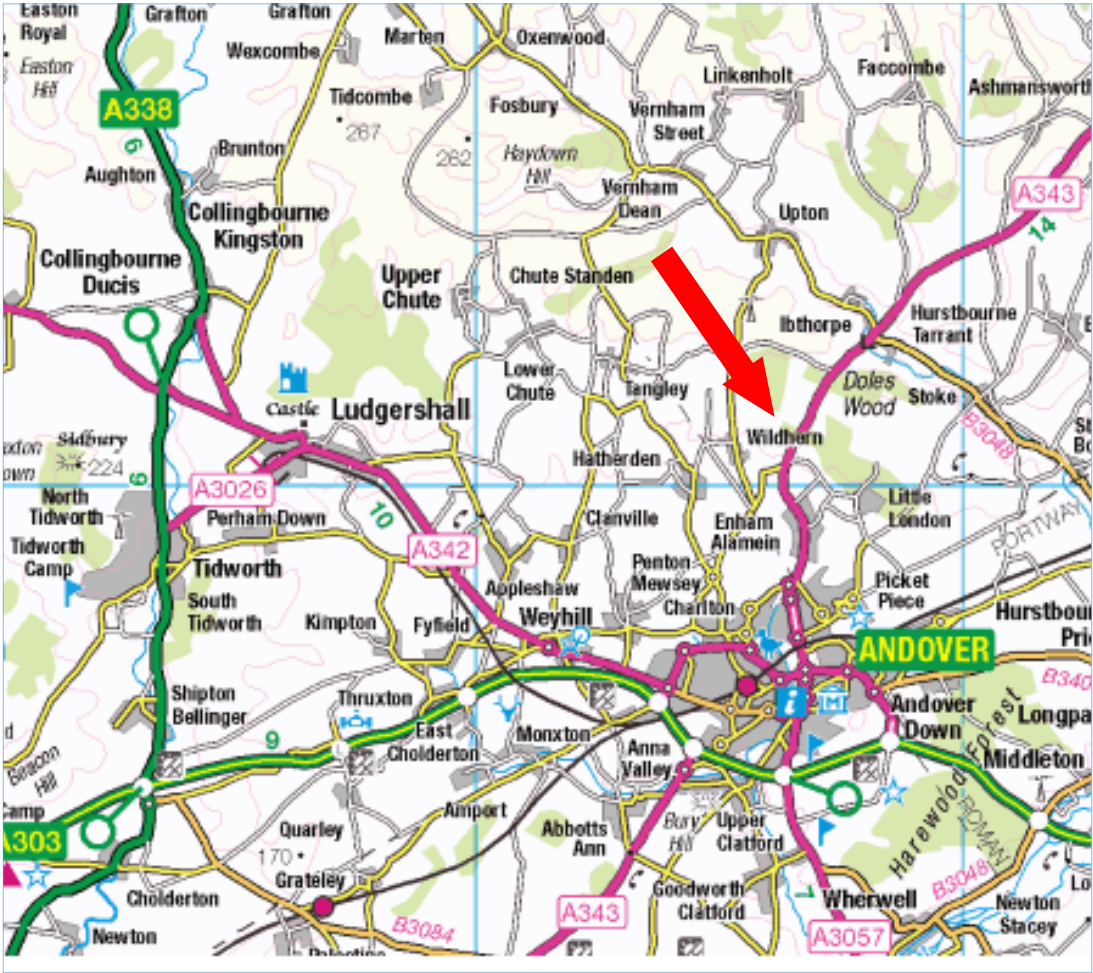


### Location

Wildhern is a picturesque village on the North side of Andover with a thriving village hall and playing field with play park and tennis court. Hatherden which is less than a mile away has a church and public house. Andover offers a good range of shopping and recreational facilities including a theatre, cinema and new leisure centre. Mainline railway station provides fast services to London Waterloo (in about an hour). The nearby village of Stockbridge offers a selection of independent boutiques and grocery shops including a range of eateries. The Cathedral cities of Winchester and Salisbury are increasingly popular as well as the town of Marlborough. All of which include amenities and activities which can be much enjoyed. There are many rural walks on the doorstep and a selection of local pubs within a 10 minute drive from the property.



The extent of the property is coloured green.  
 Additional garden available coloured yellow.  
 Note - This is for identification purposes.







PUBLIC FOOTPATH



